



**SELECT™**

Simple, Durable Door System



## RELIABLE, DURABLE AND A BONA FIDE WORKHORSE

The SELECT™ door system is engineered with superior energy-efficiency and offers an attractive low maintenance design for the energy-conscious retailer. Increase product visibility and boost sales with a system that provides trouble-free performance for years to come. The SELECT™ door system is equipped with led lighting, high impact metal handles, dual seal insulated glass and many more attractive features.

## WARRANTY



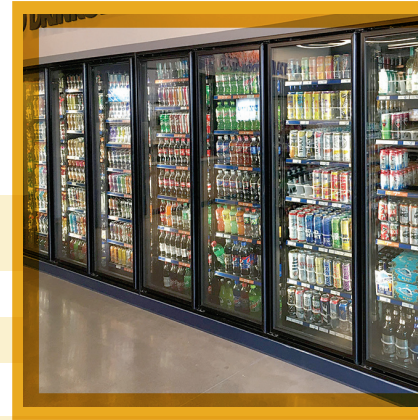
 **10 Year** Sealed Glass Unit     **5 Year** LED     **1 Year** Workmanship and Labor

# SELECT™

Simple, Durable Door System



SCAN CODE  
FOR MORE INFO



## SPECIFICATIONS

Door Sizes (Custom Sizes Available)	24"   26"   28"   30"   Width
	67"   75"   79"   Height
Shelving* (Standard Black and White)	24"   26"   28"   30"   48"   52"   56"   60"
Deep Shelving	24"   27"   36"   43"
Optional Shelving	Gravity Flow   Flex Carts
Performance:	Normal Temp - 75F/60%   Low Temp - 75F/65%   High Humidity - 75F/63%   3-Pane

### LIGHTING SPECIFICATIONS

	EcoLED2	EnVision2	EnVisionFD
Electrical	24V	24V	24V
Color Temperature (CCT)	4000K	3500K/4000K	3500K/4000K/5000K
Lumen Maintenance	L70-180,000hrs   L90-54,000hrs	L70 178,000hrs   L90-54,000hrs	L70 180,000hrs   L90-54,000hrs
Lengths/Wattage	60" - 9.5W	60" - C 10W - L/R 5W	60" - 19.5W   66" - 21.5W
	70" - 11W	70" - C 12.5W - L/R 6W	70" - 23.5W
Light Performance	Efficacy	130 lm/W	110 lm/W
	CRI	84	95
	Lumens	60" - 1235 70" - 1430	60" - C 1100 - L/R 550 70" - C 1375 - L/R 660
Certification	UL, UL2108, CE, DLC 5.1 listed, ANSI 2/NSF, EN60335-2-24		
	IP54, IK08	IP64, IK10	IP54, IK08

## FEATURES

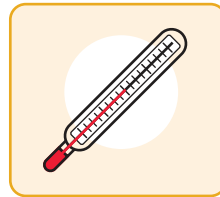
Fully compliant with DOE 2017 regulations



HOLD OPEN



TORQUE MASTER



MED/LOW TEMP DOORS

### STANDARD LED LIGHTING

- STANDARD OR FULL-LENGTH HANDLE AVAILABLE
- HIGH-PERFORMANCE 2-PANE GLASS
- MAGNETIC GASKET
- FIELD REVERSIBLE
- STANDARD OR FRENCH SWING CONFIGURATION
- 90 DEGREE HOLD OPEN
- TORQUE MASTER TENSION ADJUSTMENT
- DUAL SEAL INSULATED GLASS
- ENERGY CONTROLLER
- MATCHING PASS-THRU DOOR AVAILABLE

## AVAILABLE OPTIONS



FLEX CARTS



GRAVITY FLOW SHELVING



ENVISION™ 2

### ENVISION™ 2 LIGHTING

- ENERGY FREE FRAME
- DUAL, AFTERMARKET AND CYLINDER LOCKS AVAILABLE
- FINISHES: BLACK | SILVER SATIN
- HORIZONTAL LED LIGHTING (FRENCH DOOR ONLY)
- GRAVITY FLOW SHELVING
- DOUBLE-WIDE SHELVING FOR FRENCH DOORS
- 3-PANE GLASS
- FLEX CARTS

**GET IN TOUCH!** Please call or contact our sales department today.

180 Arboit Street, L'Assomption, Quebec J5W 4P5 | [energydoorco.com](http://energydoorco.com) | 844 433 0332 | [sales@energydoorco.com](mailto:sales@energydoorco.com)